  
**DILIGENCIA:** Por Acuerdo de Pleno del Excmo. Ayuntamiento de Cartagena de fecha 14.03.04 se aprobó definitivamente el PROYECTO DE PLANEAMIENTO URBANÍSTICO que forma parte del documento en que se gestiona la presente. Cartagena a 27.04.04 de 20  
 EL SECRETARIO



C.O. ARQUITECTOS DE MURCIA  
Exp: 102037/012 Fecha: 18/06/04

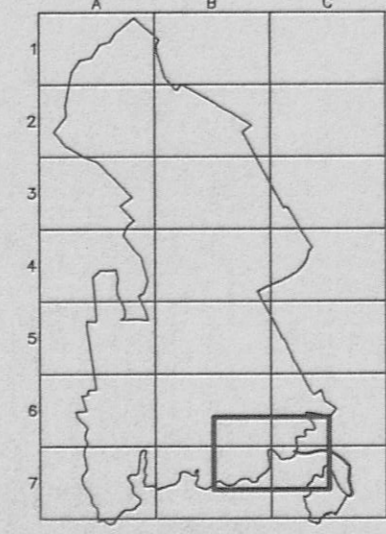


VISADO A EFECTOS ESTADÍSTICOS 236/335

PROY. STA. PLAN. C.O. C-10

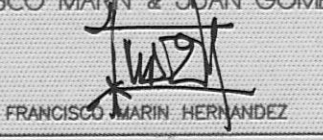

REFERENCIA	X	Y	REFERENCIA	X	Y
C10A-61	694071.135	4162814.583	C10A-27	694024.990	4163096.940
C10A-60	694050.768	4162817.148	C10A-26	694016.280	4163046.320
C10A-59	694071.229	4162805.409	C10A-25	694014.480	4163030.000
C10A-58	694050.668	4162807.877	C10A-24	694011.210	4162948.380
C10A-57	694071.258	4162817.817	C10A-23	694010.000	4162944.100
C10A-56	694070.306	4162833.570	C10A-22	694003.170	4162933.380
C10A-55	694070.878	4162800.087	C10A-21	694000.846	4162923.207
C10A-54	694070.445	4162808.082	C10A-20	694001.070	4162937.310
C10A-53	694070.283	4162817.003	C10A-19	694000.688	4162941.180
C10A-52	694069.285	4162807.306	C10A-18	694000.300	4162941.000
C10A-51	694069.021	4162806.709	C10A-17	694000.280	4162946.820
C10A-50	694069.114	4162807.386	C10A-16	694018.270	4162966.110
C10A-49	694061.850	4162827.100	C10A-15	694008.419	4162980.401
C10A-48	694061.320	4162811.300	C10A-14	694001.200	4162980.830
C10A-47	694072.882	4162905.902	C10A-13	694007.800	4162970.401
C10A-46	694060.241	4162807.897	C10A-12	694000.508	4162970.710
C10A-45	694071.440	4162818.414	C10A-11	694000.200	4162970.710
C10A-44	694071.094	4162807.281	C10A-10	694029.777	4162923.221
C10A-43	694061.058	4162804.528	C10A-9	694045.070	4162926.628
C10A-42	694072.428	4163033.252	C10A-8	694009.200	4162864.003
C10A-41	694064.208	4162872.832	C10A-7	694043.022	4162846.580
C10A-40	694039.830	4163036.620	C10A-6	694006.300	4162836.380
C10A-39	694062.160	4163068.180	C10A-5	694011.777	4162831.190
C10A-38	694061.100	4163085.408	C10A-4	694005.091	4162814.770
C10A-37	694061.391	4163095.408	C10A-3	694005.262	4162819.757
C10A-36	694061.300	4163083.290	C10A-2	694024.383	4162791.754
C10A-35	694067.190	4163082.882	C10A-1		
C10A-34	694069.090	4163103.820			
C10A-33	694051.400	4163108.970			
C10A-32	694051.500	4163110.840			
C10A-31	694057.260	4163110.840			
C10A-30	694057.260	4163107.837			
C10A-29	694058.118	4163100.850			
C10A-28	694058.070	4163100.850			

REFERENCIA	X	Y	REFERENCIA	X	Y
C10A-27	694024.990	4163096.940	C10A-1		
C10A-26	694016.280	4163046.320			
C10A-25	694014.480	4163030.000			
C10A-24	694011.210	4162948.380			
C10A-23	694010.000	4162944.100			
C10A-22	694003.170	4162933.380			
C10A-21	694000.846	4162923.207			
C10A-20	694001.070	4162937.310			
C10A-19	694000.688	4162941.180			
C10A-18	694000.300	4162941.000			
C10A-17	694000.280	4162946.820			
C10A-16	694018.270	4162966.110			
C10A-15	694008.419	4162980.401			
C10A-14	694001.200	4162980.830			
C10A-13	694007.800	4162970.401			
C10A-12	694000.508	4162970.710			
C10A-11	694000.200	4162970.710			
C10A-10	694029.777	4162923.221			
C10A-9	694045.070	4162926.628			
C10A-8	694009.200	4162864.003			
C10A-7	694043.022	4162846.580			
C10A-6	694006.300	4162836.380			
C10A-5	694011.777	4162831.190			
C10A-4	694005.091	4162814.770			
C10A-3	694005.262	4162819.757			
C10A-2	694024.383	4162791.754			



NORMA URBANÍSTICA	AC
SUPERFICIE TERRENO	42278 m <sup>2</sup>
EDIFICABILIDAD	0.1713 m <sup>2</sup> /m <sup>2</sup>
SUPERFICIE CONST. MAX.	7242 m <sup>2</sup>
OCCUPACION MÁXIMA	15 %
MÁXIMO N.º PLANTAS	3

**TEXTO REFUNDIDO FINAL**  
 ACOMODADO AL ACUERDO DE APROBACION INICIAL ADOPTADO POR LA COMISION MUNICIPAL DE GOBIERNO DE 06/JUNIO/2003.

 EXCMO. AYUNTAMIENTO DE CARTAGENA	MODIFICACION PUNTUAL Nº 4 DEL P.P. DE ATAMARIA
	ORDENACION VIGENTE CEDULA URBANÍSTICA C-10A
FRANCISCO MARIN & JUAN GOMEZ, ARQUITECTOS ASOCIADOS  FRANCISCO MARIN HERNANDEZ	JUAN GOMEZ AGOSTA 
FECHA JUN. 2004	ESCALA 1/1000
PLANO 3.1.11	